

JUMO GmbH & Co. KG
 Delivery address: Mackenrodtstraße 14
 36039 Fulda, Germany
 Postal address: 36035 Fulda, Germany
 Phone: +49 661 6003-0
 Fax: +49 661 6003-607
 E-mail: mail@jumo.net
 Internet: www.jumo.net

JUMO Instrument Co. Ltd.
 JUMO House
 Temple Bank, Riverway
 Harlow, Essex CM20 2DY, UK
 Phone: +44 1279 635533
 Fax: +44 1279 635262
 E-mail: sales@jumo.co.uk
 Internet: www.jumo.co.uk

JUMO Process Control, Inc.
 6733 Myers Road
 East Syracuse, NY 13057, USA
 Phone: 315-437-5866
 1-800-554-5866
 Fax: 315-437-5860
 E-mail: info.us@jumo.net
 Internet: www.jumousa.com



JUMO HEATtemp

Push-in RTD Temperature Probe for Heat and Cold Meters with Terminal Head for Thermowells (Type PL)

- For temperatures between 0 and 180 °C
- Approval for heat meters as replaceable temperature probes;
 MID and domestic approvals
- Fulfills the requirements of DIN EN 1434, AGFW 202, and FW211
- Paired and calibrated according to the German calibration regulations
- Production certified according to module D of MID (CE and metrology identification marking)
- Adapted accessories for installation (data sheet 902440)
- Approval for cold meter

Heat and cold meter RTD temperature probes are installed to measure temperatures in closed pipeline systems. Thanks to insertion into thermowells with matching tolerance, emptying the system for the regular replacement at the end of the certification period is no longer necessary. The temperature probes are approved according to the EU directive 2004/22/EC (MID) as well as according to the German calibration regulations (domestic approval). The temperature probes are available in paired and calibrated versions. The officially recognized testing agency for heat KF2 is available for this. Moreover, the production is certified according to module D of MID, and the temperature probes are also available with the CE and metrology identification marking.



Heat meter

Technical data

Terminal head	Form J or B, aluminum diecast, M16 × 1.5 or M24 × 1.5, IP65, ambient temperature -20 to +100 °C
Process connection	Push-in RTD temperature probe for thermowells (immersion sleeves)
Protection tube	Stainless steel, Ø 6 mm with matching tolerance for thermowell
Measuring insert	Platinum temperature sensor according to DIN EN 60751 Nominal value: Pt100, Pt500, Pt1000; class B Connection: two-wire or four-wire circuit
Temperature	0 to 180 °C
Temperature difference	3 to 180 K
Minimum immersion depth	25 mm
Insertion length	85 to 400 mm
Admissible rated pressure PN	40 bar (with thermowell)
Response behavior	$t_{0.5} \leq 10$ s (installed in thermowell)
Thermoelectric voltage	≤ 5 μ V
Environmental conditions	Climatic 0 to 70 °C Protection type IP65 Electromagnetic E1 Mechanical M3 Environment class C
Accessories	Thermowells, data sheet 902440



Cold meter

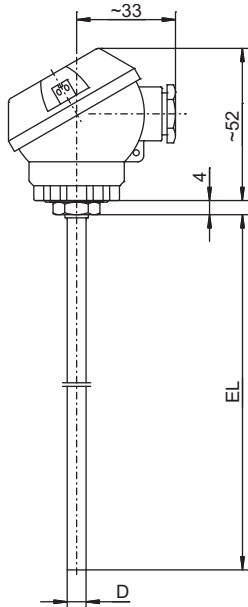
JUMO GmbH & Co. KG
 Delivery address: Mackenrodtstraße 14
 36039 Fulda, Germany
 Postal address: 36035 Fulda, Germany
 Phone: +49 661 6003-0
 Fax: +49 661 6003-607
 E-mail: mail@jumo.net
 Internet: www.jumo.net

JUMO Instrument Co. Ltd.
 JUMO House
 Temple Bank, Riverway
 Harlow, Essex CM20 2DY, UK
 Phone: +44 1279 635533
 Fax: +44 1279 635262
 E-mail: sales@jumo.co.uk
 Internet: www.jumo.co.uk

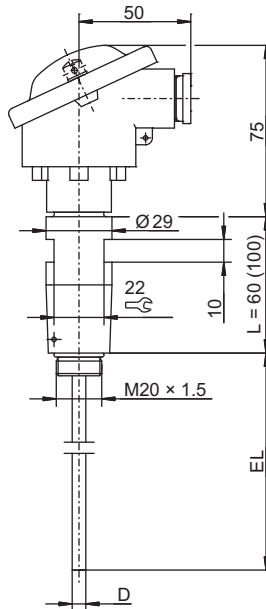
JUMO Process Control, Inc.
 6733 Myers Road
 East Syracuse, NY 13057, USA
 Phone: 315-437-5866
 1-800-554-5866
 Fax: 315-437-5860
 E-mail: info.us@jumo.net
 Internet: www.jumousa.com



Dimensions



Basic type 90.238-F25 (PL)
 Basic type 902434/10 (PL)
 Basic type 902437/10 (PL)



Basic type 902464/10 (PL)

Overview of approvals

Basic type	Approval	
	Type	Number
90.238-F25	Domestic (Germany)	22.30/90.04
902434/10	Domestic (Germany) according to DIN EN 1434	22.70/00.02
902437/10	Module B of MID ^a	DE-06-MI004-PTB015
902464/10	Domestic (Germany) (Cold)	22.77/13.01

^a MID = Measuring Instruments Directive 2004/22/EC

JUMO GmbH & Co. KG
 Delivery address: Mackenrodtstraße 14
 36039 Fulda, Germany
 Postal address: 36035 Fulda, Germany
 Phone: +49 661 6003-0
 Fax: +49 661 6003-607
 E-mail: mail@jumo.net
 Internet: www.jumo.net

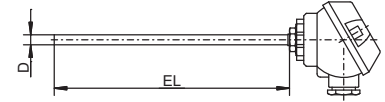
JUMO Instrument Co. Ltd.
 JUMO House
 Temple Bank, Riverway
 Harlow, Essex CM20 2DY, UK
 Phone: +44 1279 635533
 Fax: +44 1279 635262
 E-mail: sales@jumo.co.uk
 Internet: www.jumo.co.uk

JUMO Process Control, Inc.
 6733 Myers Road
 East Syracuse, NY 13057, USA
 Phone: 315-437-5866
 1-800-554-5866
 Fax: 315-437-5860
 E-mail: info.us@jumo.net
 Internet: www.jumousa.com



Order details

	902434/10	(1) Basic type Push-in RTD temperature probe with terminal head form J and continuous protection tube, design type PL according to DIN EN 1434 (2003)
		(2) Operating temperature in °C
x	824	0 to 150 °C (standard)
x	830	0 to 180 °C
		(3) Measuring insert
x	1003	1 × Pt100 in two-wire circuit
x	1004	1 × Pt500 in two-wire circuit
x	1005	1 × Pt1000 in two-wire circuit
x	1011	1 × Pt100 in four-wire circuit
x	1012	1 × Pt500 in four-wire circuit
x	1013	1 × Pt1000 in four-wire circuit
		(4) Tolerance class according to DIN EN 60751
x	1	Class B (standard)
x	2	Class A
x	3	Class AA (1/3 DIN B)
		(5) Protection tube diameter D in mm
x	6	Ø 6 mm (tolerance according to DIN EN 1434-2)
		(6) Insertion length EL in mm (85 to 400 mm)
x	105	105 mm
x	140	140 mm
x	230	230 mm
x	...	Specifications in plain text
		(7) Extra code
x	000	Without
x	319	Terminal head form B
x	320	Terminal head form BUZ
x	340	Version paired according to DIN EN 1434 ^a
x	341	Version paired according to DIN EN 1434 and calibrated ^{a, b}



^a Price for pairing depends on number of units; cost effective from 30 pairs of temperature probes

^b Calibration fees according to current Federal Law Gazette (Bundesgesetzblatt), dependent on number of units, not eligible for discount

Order code	(1)	(2)	(3)	(4)	(5)	(6)	(7)	...
Order example	902434/10	- 824	- 1003	- 1	- 6	- 105	/ 341	, ... ^a

^a List extra codes in sequence, separated by commas.

Note:

Thermowells, data sheet 902440
 Terminal heads, data sheet 909715

JUMO GmbH & Co. KG
 Delivery address: Mackenrodtstraße 14
 36039 Fulda, Germany
 Postal address: 36035 Fulda, Germany
 Phone: +49 661 6003-0
 Fax: +49 661 6003-607
 E-mail: mail@jumo.net
 Internet: www.jumo.net

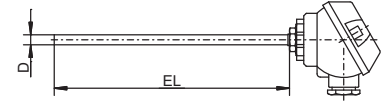
JUMO Instrument Co. Ltd.
 JUMO House
 Temple Bank, Riverway
 Harlow, Essex CM20 2DY, UK
 Phone: +44 1279 635533
 Fax: +44 1279 635262
 E-mail: sales@jumo.co.uk
 Internet: www.jumo.co.uk

JUMO Process Control, Inc.
 6733 Myers Road
 East Syracuse, NY 13057, USA
 Phone: 315-437-5866
 1-800-554-5866
 Fax: 315-437-5860
 E-mail: info.us@jumo.net
 Internet: www.jumousa.com



Order details

	902437/10	(1) Basic type Push-in RTD temperature probe with terminal head form J and continuous protection tube, design type PL according to DIN EN 1434 (2003)
		(2) Operating temperature in °C
x	824	0 to 150 °C (standard)
x	830	0 to 180 °C
		(3) Measuring insert
x	1003	1 × Pt100 in two-wire circuit
x	1004	1 × Pt500 in two-wire circuit
x	1005	1 × Pt1000 in two-wire circuit
x	1011	1 × Pt100 in four-wire circuit
x	1012	1 × Pt500 in four-wire circuit
x	1013	1 × Pt1000 in four-wire circuit
		(4) Tolerance class according to DIN EN 60751
x	1	Class B (standard)
x	2	Class A
x	3	Class AA (1/3 DIN B)
		(5) Protection tube diameter D in mm
x	6	Ø 6 mm (tolerance according to DIN EN 1434-2)
		(6) Insertion length EL in mm (85 to 400 mm)
x	105	105 mm
x	140	140 mm
x	230	230 mm
x	...	Specifications in plain text
		(7) Extra code
x	000	Without
x	319	Terminal head form B
x	320	Terminal head form BUZ
x	340	Version paired according to DIN EN 1434 ^a
x	761	Version paired with CE and metrology identification marking (initial calibration) ^a



^a Price for pairing depends on number of units; cost effective from 30 pairs of temperature probes

	(1)	(2)	(3)	(4)	(5)	(6)	(7)						
Order code	<input type="text"/>	-	<input type="text"/>	-	<input type="text"/>	-	<input type="text"/>	/	<input type="text"/> , ... ^a				
Order example	902437/10	-	824	-	1003	-	1	-	6	-	105	/	761

^a List extra codes in sequence, separated by commas.

Note:

Thermowells, data sheet 902440
 Terminal heads, data sheet 909715

JUMO GmbH & Co. KG
 Delivery address: Mackenrodtstraße 14
 36039 Fulda, Germany
 Postal address: 36035 Fulda, Germany
 Phone: +49 661 6003-0
 Fax: +49 661 6003-607
 E-mail: mail@jumo.net
 Internet: www.jumo.net

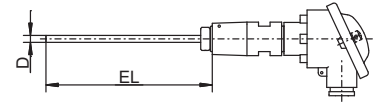
JUMO Instrument Co. Ltd.
 JUMO House
 Temple Bank, Riverway
 Harlow, Essex CM20 2DY, UK
 Phone: +44 1279 635533
 Fax: +44 1279 635262
 E-mail: sales@jumo.co.uk
 Internet: www.jumo.co.uk

JUMO Process Control, Inc.
 6733 Myers Road
 East Syracuse, NY 13057, USA
 Phone: 315-437-5866
 1-800-554-5866
 Fax: 315-437-5860
 E-mail: info.us@jumo.net
 Internet: www.jumousa.com



Order details

	902464/10	(1) Basic type Push-in RTD temperature probe with terminal head form B and continuous protection tube, design type PL according to DIN EN 1434, PTB approved
		(2) Operating temperature in °C
x	818	0 to 120 °C
		(3) Measuring insert
x	1003	1 × Pt100 in two-wire circuit
x	1004	1 × Pt500 in two-wire circuit
x	1005	1 × Pt1000 in two-wire circuit
x	1011	1 × Pt100 in four-wire circuit
x	1012	1 × Pt500 in four-wire circuit
x	1013	1 × Pt1000 in four-wire circuit
		(4) Tolerance class according to DIN EN 60751
x	1	Class B (standard)
x	2	Class A
x	3	Class AA (1/3 DIN B)
		(5) Protection tube diameter D in mm
x	6	Ø 6 mm (tolerance according to DIN EN 1434-2)
		(6) Insertion length EL in mm (85 to 400 mm)
x	105	105 mm
x	140	140 mm
x	230	230 mm
x	...	Specifications in plain text
		(7) Extra code
x	000	Without
x	320	Terminal head form BUZ
x	340	Version paired according to DIN EN 1434 ^a
x	341	Version paired according to DIN EN 1434 and calibrated ^{a, b}



^a Price for pairing depends on number of units; cost effective from 30 pairs of temperature probes

^b Calibration fees according to current Federal Law Gazette (Bundesgesetzblatt), dependent on number of units, not eligible for discount

	(1)	(2)	(3)	(4)	(5)	(6)	(7)	...					
Order code	<input type="text"/>	-	<input type="text"/>	-	<input type="text"/>	-	<input type="text"/>	/	<input type="text"/>	, ... ^a			
Order example	902464/10	-	818	-	1003	-	1	-	6	-	105	/	341

^a List extra codes in sequence, separated by commas.

Note:

Thermowells, data sheet 902440
 Terminal heads, data sheet 909715